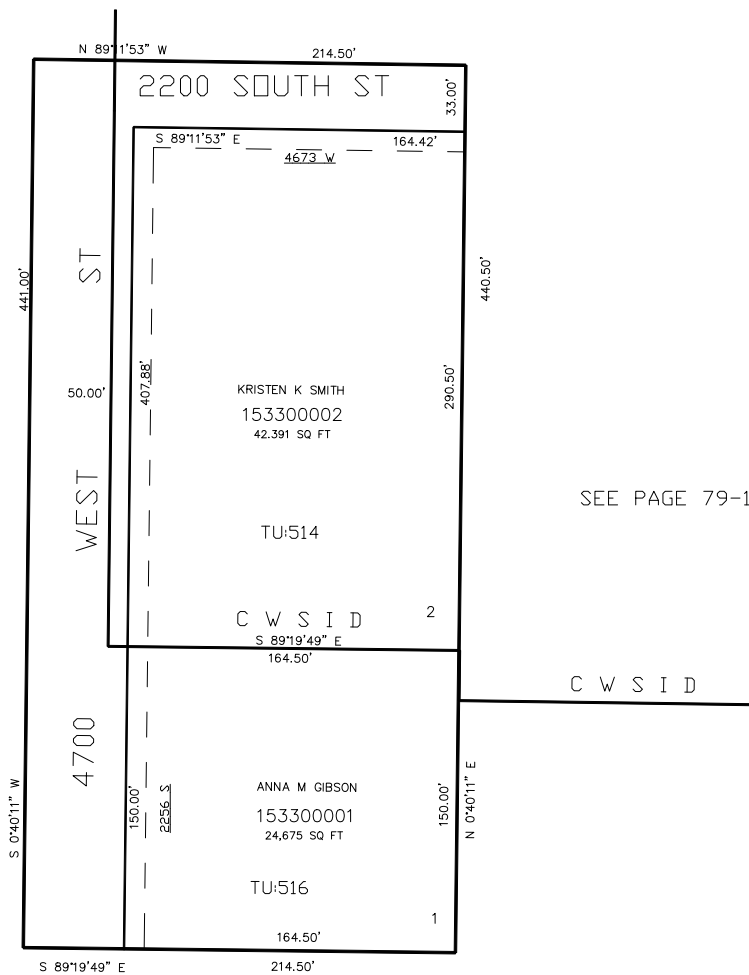


IN WEBER COUNTY

TAXING UNIT: 516, 514

SCALE 1" = 50'

SEE PAGE 79-1



SEE PAGE 79-1

SEE PAGE 79-1

SEE PAGE 273

FOR COMPLETE ENG DATA SEE
ORIGINAL DEDICATION PLAT IN
BOOK 56, PAGE 86 OF RECORDS.

10' UTILITY & DRAINAGE EASEMENTS EACH
SIDE OF PROPERTY LINES AS INDICATED
BY DASHED LINES EXCEPT AS OTHERWISE
SHOWN.

FOR TAX PURPOSES ONLY

KBL 10-02